

**EC** 系列  
**SERIES**

105°C 22mm 高小型品  
寿命: 105°C 3000 小时

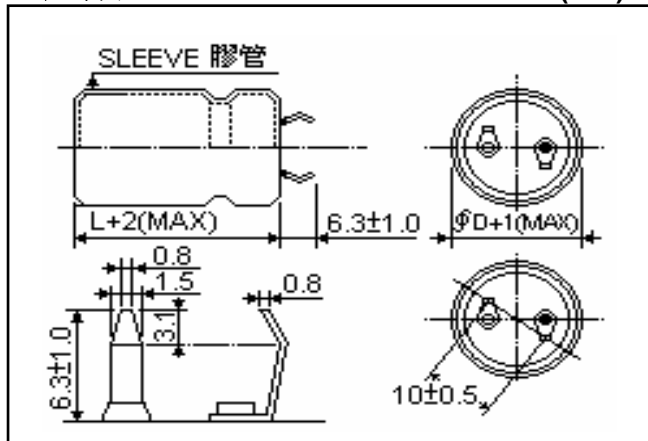
105°C 22mm HEIGHT SNAP-INS  
Load Life :105°C 3000 hours

■ 规格表 **SPECIFICATIONS**

项目 Items	特性 Characteristics					
使用温度范围 Category Temperature Range	-25~+105°C					
额定电压范围 Rated Voltage Range	200~450V.DC					
静电容量容许差 Capacitance Tolerance	±20%(M)(25°C, 120Hz)					
泄漏电流 Leakage Current (MAX)	I ≤ 0.03CV (施加额定电压 5 分钟后) (After 5 minutes application of rated voltage) I: 泄漏电流 Leakage Current(μ A) C: 额定静电容量 Rated Capacitance(μ F) V: 额定电压 Rated Voltage(V)					
散逸因素(tan δ) Dissipation Factor (MAX)	额定电压(V) Rated Voltage	200	400	420	450	120Hz
	tan δ	0.15	0.20	0.20	0.20	25°C
高温负荷 Load Life	105°C恒温施加额定电压(含纹波电流)3000 小时后, 必须满足下列的值。 After applying rated voltage with rated ripple current for 3000hrs at 105°C, the capacitors shall meet the following requirements					
	静电容量变化率 Capacitance Change	初期值±25%以内 Within ±25% of the initial value				
	散逸因素(tan δ) Dissipation Factor	规格值 200%以下 Not more than 200% of the specified value				
	泄漏电流 Leakage Current	规格值以下 Not more than the specified value				
高温放置 Shelf Life	105°C恒温不施加额定电压 1000 小时后, 在试验前必须参照 JIS C5102 4.4 规定进行充电 60 秒之后, 必须满足下列的值。 After applying no rated voltage for 1000hrs at 105°C, pre-treatment for measurements shall be conducted after application of DC rated voltage for 60 second. The capacitors shall meet the following requirements. (Reference Standard JIS C5102 4.4)					
	静电容量变化率 Capacitance Change	初期值±20%以内 Within ±20% of the initial value				
	散逸因素(tan δ) Dissipation Factor	规格值 200%以下 Not more than 200% of the specified value				
	泄漏电流 Leakage Current	规格值 200%以下 Not more than 200% of the specified value				
突波电压(V) Surge Voltage	额定电压(V) Rated Voltage	200	400	420	450	120Hz
	突波电压(V) Surge Voltage	250	450	470	500	
低温特性 Low Temperature Stability (合成阻抗比) Impedance Ratio (MAX)	额定电压(V) Rated Voltage	200	400	420	450	120Hz
	Z(-25°C) / Z(25°C)	4	6	6	6	
	Z(-40°C) / Z(25°C)	-	-	-	-	
Reference Standard	JIS C5141					

■ 尺寸图 **DIMENSIONS**

(mm)



■ 纹波电流补偿系数 **MULTIPLIER FOR RIPPLE CURRENT**

(1) 频率系数 Frequency coefficient

频率(Hz)	Frequency	60	120	300	1k	10k	100k
系数 Coefficient	10~50V	0.90	1.00	1.03	1.05	1.10	1.10
	63~100V	0.85	1.00	1.07	1.13	1.19	1.20
	160~450V	0.80	1.00	1.15	1.25	1.35	1.40

■ 尺寸一览表, 额定纹波电流一览表 STANDARD SIZE, RATED RIPPLE CURRENT

Size  $\phi$  D×L(mm), Ripple Current (A r.m.s./105°C, 120 Hz)

额定电压 WV(V.DC) 额定 静电容量 Cap(μF)	200 (2D)		400 (2G)		420 (2S)		450 (2W)							
	Size	Ripple	Size	Ripple	Size	Ripple	Size	Ripple	Size	Ripple	Size	Ripple	Size	Ripple
27							20×22	0.25						
33							20×22	0.28						
39			20×22	0.30	20×22	0.30	20×22	0.30						
47			20×22	0.33	20×22	0.33	22×22	0.35						
56			20×22	0.36	22×22	0.38	22×22	0.38						
68			22×22	0.42	25×22	0.45	25×22	0.45						
82			25×22	0.50	25×22	0.50	25×22	0.50						
100			25×22	0.55	30×22	0.62	30×22	0.60						
120	20×22	0.58	30×22	0.68	30×22	0.68	30×22	0.67						
150	20×22	0.64	30×22	0.76	35×22	0.83	35×22	0.83						
180	22×22	0.75	35×22	0.92	35×22	0.91	35×22	0.91						
220	22×22	0.82	35×22	1.02										
270	25×22	1.00												
330	30×22	1.22												
390	30×22	1.32												
470	35×22	1.55												