

ML 系列
SERIES

105°C牛角型成型 90 度
寿命: 105°C 3000 小时
适用于有高度设备的设计

105°C Ox horn type shaping 90 Degree
Load Life :105°C 3000 hours
Suitable for flat equipment design

■ **规格表 SPECIFICATIONS**

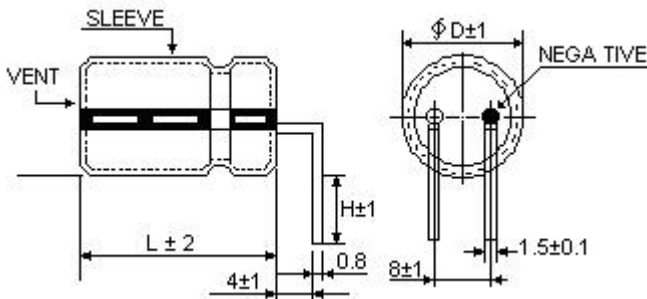
项目 Items	特性 Characteristics						
使用温度范围 Category Temperature Range	-25~+105°C						
额定电压范围 Rated Voltage Range	200~450V.DC						
静电容量容许差 Capacitance Tolerance	±20%(M)(25°C, 120Hz)						
泄漏电流 Leakage Current (MAX)	I ≤ 0.03CV (施加额定电压 5 分钟后) (After 5 minutes application of rated voltage) I: 泄漏电流 Leakage Current(μA) C: 额定静电容量 Rated Capacitance(μF) V: 额定电压 Rated Voltage(V)						
散逸因素(tan δ) Dissipation Factor (MAX)	额定电压(V) Rated Voltage	200	250	350	400	450	120Hz
	tan δ	0.15	0.15	0.20	0.20	0.20	25°C
高温负荷 Load Life	105°C 恒温施加额定电压(含纹波电流)3000 小时后, 必须满足下列的值。 After applying rated voltage with rated ripple current for 3000hrs at 105°C, the capacitors shall meet the following requirements						
	静电容量变化率 Capacitance Change	初期值 ±25% 以内					Within ±25% of the initial value
	散逸因素(tan δ) Dissipation Factor	规格值 200% 以下					Not more than 200% of the specified value
	泄漏电流 Leakage Current	规格值 以下					Not more than the specified value
高温放置 Shelf Life	105°C 恒温不施加额定电压 1000 小时后, 必须满足下列的值。 After applying no rated voltage for 1000hrs at 105°C. The capacitors shall meet the following requirements.						
	静电容量变化率 Capacitance Change	初期值 ±20% 以内					Within ±20% of the initial value
	散逸因素(tan δ) Dissipation Factor	规格值 200% 以下					Not more than 200% of the specified value
	泄漏电流 Leakage Current	规格值 200% 以下					Not more than 200% of the specified value
突波电压(V) Surge Voltage	额定电压(V) Rated Voltage	200	250	350	400	450	
	突波电压(V) Surge Voltage	250	300	400	450	500	
低温特性 Low Temperature Stability (合成阻抗比) Impedance Ratio (MAX)	额定电压(V) Rated Voltage	200~250		350~450		120Hz	
	Z(-25°C) / Z(25°C)	3		8			

■ **尺寸图 DIMENSIONS**

(mm)

■ **纹波电流补偿系数 MULTIPLIER FOR RIPPLE CURRENT**

(1) 频率系数 Frequency coefficient



频率(Hz)	Frequency	60	120	300	1k	10k ≒
系数 Coefficient	200~250V	0.80	1.00	1.10	1.15	1.20
	400~450V	0.80	1.00	1.05	1.12	1.15

■ 尺寸一览表, 额定纹波电流一览表 STANDARD SIZE, RATED RIPPLE CURRENT

Size ϕ D \times L(mm), Ripple Current (A r.m.s./105°C, 120 Hz)

额定电压 WV(V.DC)	200 (2D)								额定电压 WV(V.DC)	250 (2E)							
	ϕ 22		ϕ 25		ϕ 30		ϕ 35			ϕ 22		ϕ 25		ϕ 30		ϕ 35	
	Size	Ripple	Size	Ripple	Size	Ripple	Size	Ripple		Size	Ripple	Size	Ripple	Size	Ripple	Size	Ripple
220	22 \times 25	0.80							150	22 \times 25	0.70						
330	22 \times 30	1.05							220	22 \times 30	0.90	25 \times 25	0.90				
390	22 \times 35	1.25							270	22 \times 35	1.05	25 \times 30	1.20				
470	22 \times 40	1.45	25 \times 30	1.45					390	22 \times 45	1.40	25 \times 35	1.40				
560	22 \times 45	1.65	25 \times 35	1.65					470	22 \times 50	1.60	25 \times 40	1.60	30 \times 30	1.60		
680	22 \times 50	1.90	25 \times 40	1.90	30 \times 30	1.90			560			25 \times 45	1.90	30 \times 35	1.90		
820			25 \times 45	2.20	30 \times 35	2.20			680					30 \times 40	2.10	35 \times 30	2.10
1000			25 \times 50	2.50	30 \times 40	2.50	35 \times 30	2.50	820					30 \times 45	2.40	35 \times 35	2.40
1200					30 \times 45	2.90	35 \times 35	2.90	1000					30 \times 50	2.80	35 \times 40	2.80
1500					30 \times 50	3.30	35 \times 40	3.30	1200							35 \times 45	3.30
1800							35 \times 50	4.00									

额定电压 WV(V.DC)	350 (2V)								额定电压 WV(V.DC)	400 (2G)							
	ϕ 22		ϕ 25		ϕ 30		ϕ 35			ϕ 22		ϕ 25		ϕ 30		ϕ 35	
	Size	Ripple	Size	Ripple	Size	Ripple	Size	Ripple		Size	Ripple	Size	Ripple	Size	Ripple	Size	Ripple
100	22 \times 25	0.50							100	22 \times 25	0.45						
120	22 \times 30	0.60							120	22 \times 30	0.60						
180	22 \times 40	0.80	25 \times 30	0.80					150	22 \times 35	0.70						
220	22 \times 45	0.95	25 \times 35	0.95	30 \times 25	0.95			180	22 \times 40	0.80	25 \times 30	0.80				
270	22 \times 50	1.10	25 \times 40	1.10	30 \times 30	1.10			220	22 \times 45	0.95	25 \times 35	0.95				
330			25 \times 45	1.25	30 \times 35	1.25			270	22 \times 50	1.05	25 \times 40	1.05				
390			25 \times 50	1.40	30 \times 40	1.40	35 \times 30	1.40	330			25 \times 45	1.20	30 \times 35	1.20		
470					30 \times 45	1.65	35 \times 35	1.65	390			25 \times 50	1.40	30 \times 40	1.40		
560					30 \times 50	1.90	35 \times 40	1.90	470					30 \times 45	1.60	35 \times 35	1.60
680							35 \times 45	2.00	560					30 \times 50	1.85	35 \times 40	1.85
820							35 \times 50	2.50	680							35 \times 45	2.00
									820							35 \times 50	2.50

额定电压 WV(V.DC)	450 (2W)							
	ϕ 22		ϕ 25		ϕ 30		ϕ 35	
	Size	Ripple	Size	Ripple	Size	Ripple	Size	Ripple
68	22 \times 25	0.40						
100	22 \times 30	0.55	25 \times 25	0.55				
120	22 \times 35	0.60	25 \times 30	0.70				
150	22 \times 40	0.70	25 \times 35	0.75	30 \times 25	0.75		
180	22 \times 50	0.90	25 \times 40	0.90	30 \times 30	0.90		
220			25 \times 45	1.00	30 \times 35	1.00		
270			25 \times 50	1.15	30 \times 40	1.15	35 \times 30	1.15
330					30 \times 45	1.40	35 \times 35	1.40
390					30 \times 50	1.60	35 \times 40	1.60
470							35 \times 45	1.80
560							35 \times 50	2.10